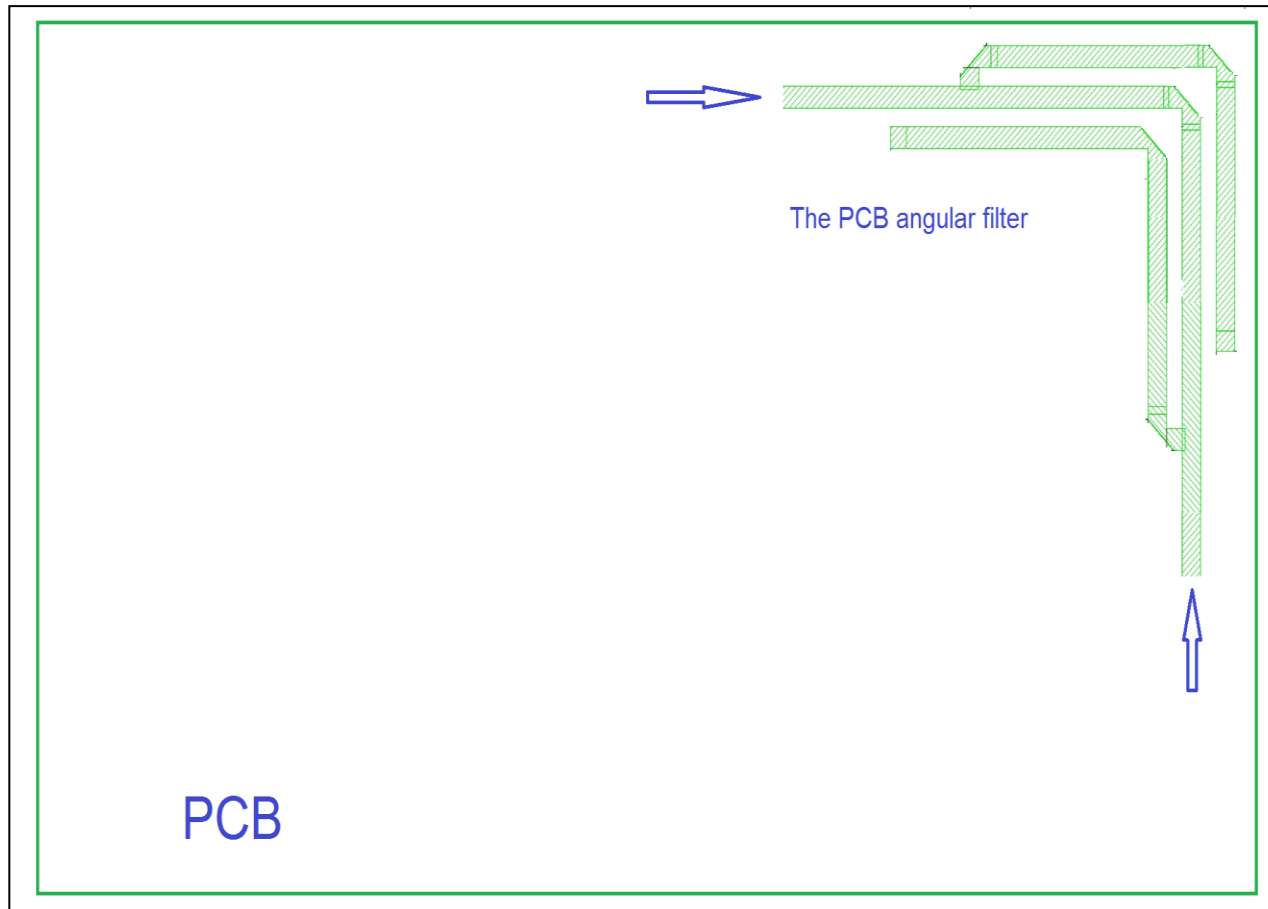


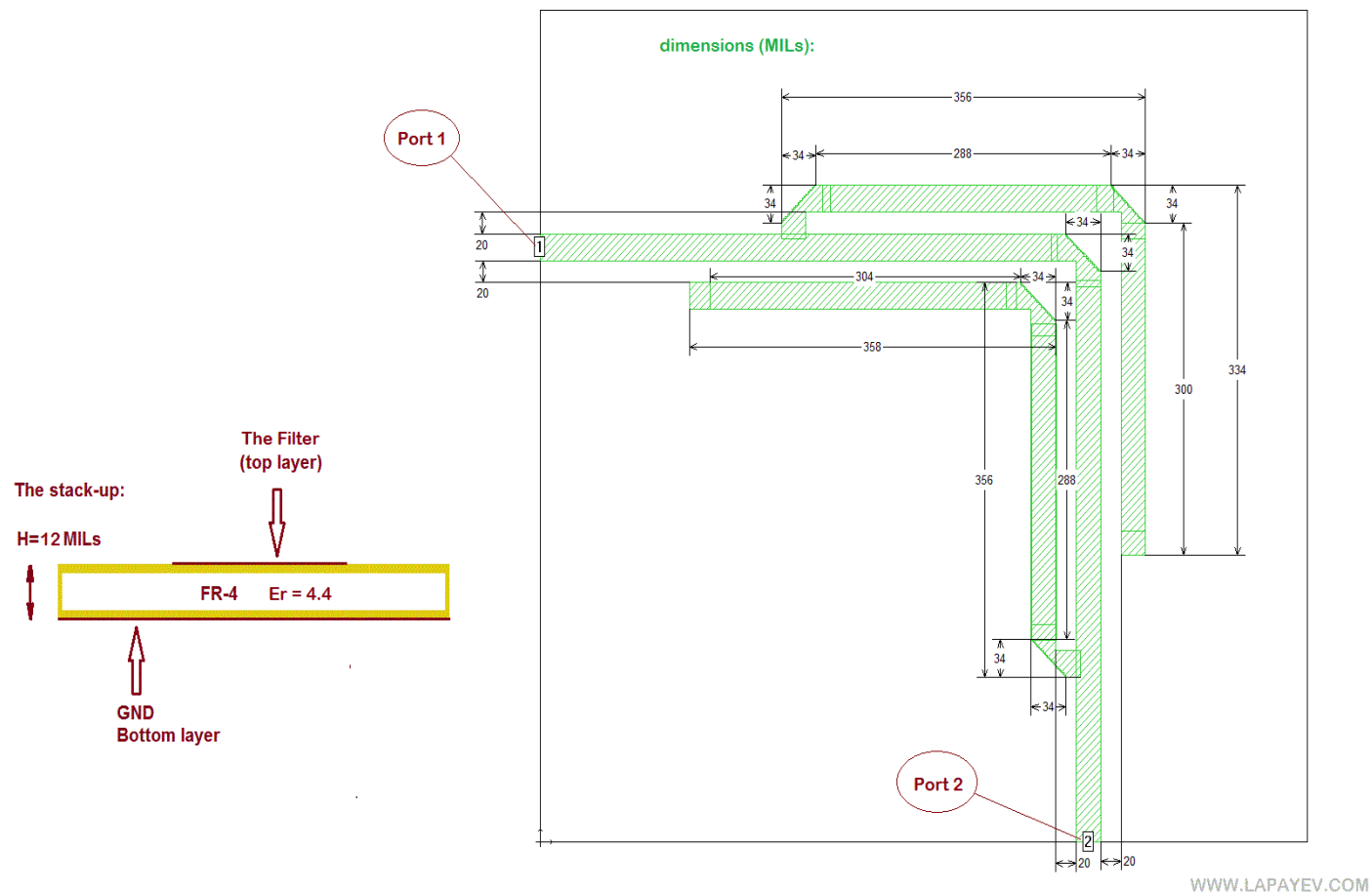
## GPS 1.57542 GHz Wi-Fi/BT 2.4GHz Angular Notch PCB Filter

The idea behind this was to create a PCB filter that could be take placement space not too much, so did the idea of the angular filter. All parameters show below. Also, I know that PCB filtering design is very tricky and it is not easy as it seems, but maybe someone could be interested.

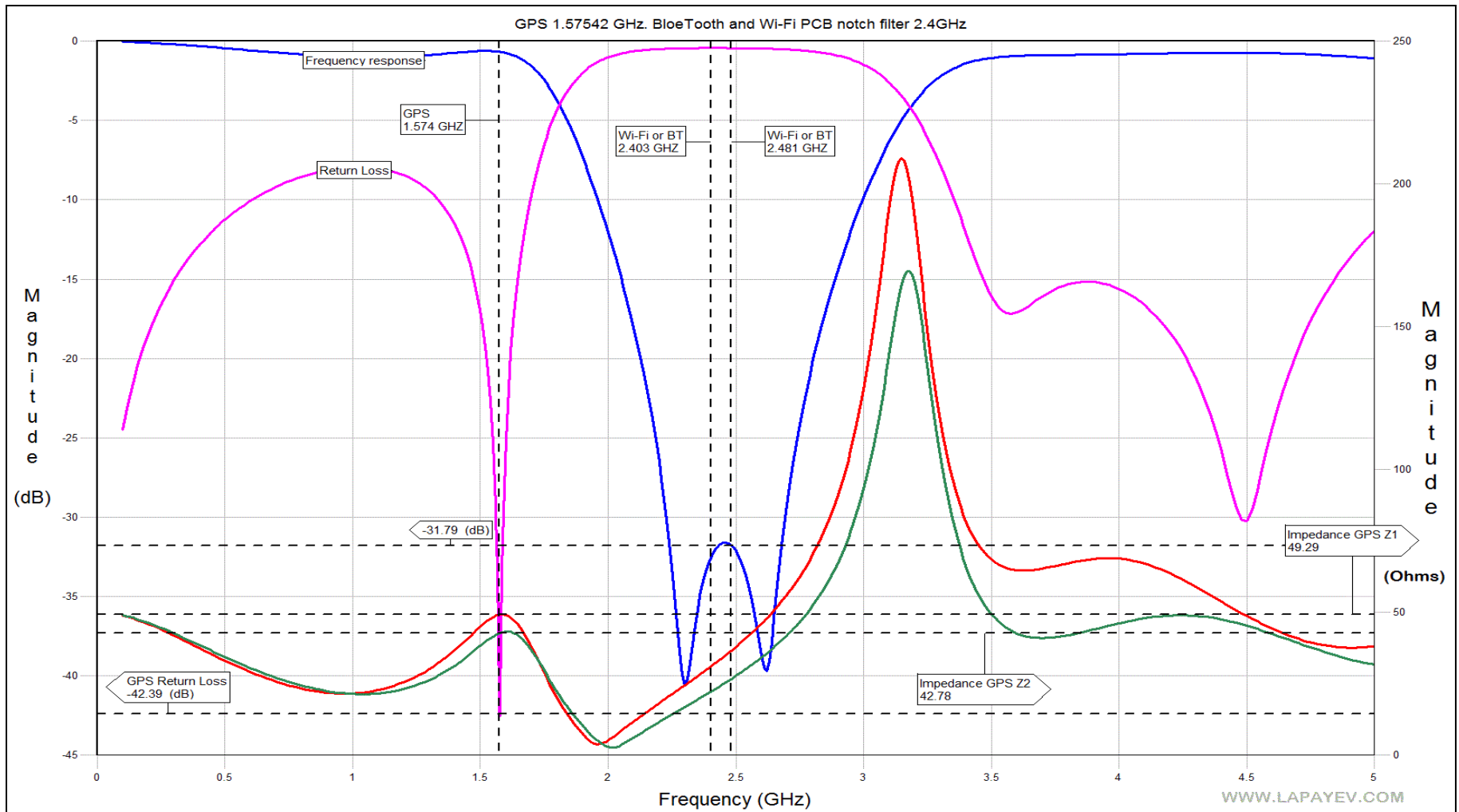


1. GPS Wi-Fi/BT Angular Notch PCB Filter. The placement.

The GPS 1.57542 GHz, Bluetooth and WI-FI PCB Notch Filter - 2.4 GHz Stack-up and dimensions.



2. GPS Wi-Fi/BT Angular Notch PCB Filter. Design.



3. GPS Wi-Fi/BT Angular Notch PCB Filter. Frequency Response, Return Loss and Impedance.

**Alex Lapayev**

Portland, Maine USA

April 2014

[www.lapayev.com](http://www.lapayev.com)

[info@lapayev.com](mailto:info@lapayev.com)

[lapayev@gmail.com](mailto:lapayev@gmail.com)